

## **MUGA Feasibility Study Report Summary – Tim Phillips (February 23<sup>rd</sup>, 2026)**

- The final version of the report was received on February 12<sup>th</sup>, 2026
- The consultant provided analysis of a total of seven potential locations for a MUGA. Three were locations in the Glebe Field while four were in the Free Gardens. The following factors were used by the consultant to rank them:
  - Noise (>30m from nearest property)
  - High voltage overhead cables
  - Lighting (we don't propose any)
  - Safety concerns
  - Maintenance costs
  - Tree protection orders
- The top two potential locations (1-2) are both in the Glebe Field
- The next two ranked locations (3-4) are both in the Free Gardens
- The three lowest ranked locations (5-7) were considered by the consultant to be non-starters, but were included for completeness.
- I believe that location 4 would be rejected by the PC due to the impact on the Jubilee Gardens
- If we are able to negotiate a license for the Glebe Field, we should pick location 1 as it is better for tennis use.
- If we cannot get a license for the Glebe Field, then the only option available (location 3) puts the MUGA in the South-East corner of the allotments (it will require moving of the bore-hole planned for that corner.
- The estimated budget for a MUGA of the recommended size of 35m x 17m is £91k to £108k plus VAT
- Estimated timeline would be approximately 8 months, including planning permission, specification and tendering, contractor selection, and construction.
- The next steps would include the following:
  - Continue to try for a license for the Glebe Field
  - Communicate with the FGCI0 regarding the option for putting a MUGA in the Free Gardens if we cannot get a license for the Glebe Field.
  - Put together the outline of a plan for a village consultation regarding putting a MUGA in the Free Gardens
  - Build a plan for how we could put this to a village referendum. I believe we'll have to follow a protocol similar to the council elections to ensure we cannot be accused of not including everyone. Only registered voters, not children could vote.
- The following three pages show the top three locations.

Location – 1 – In Glebe Field close to Dauntsey Road

Orientation – West to East




Access – Off Dauntsey Road

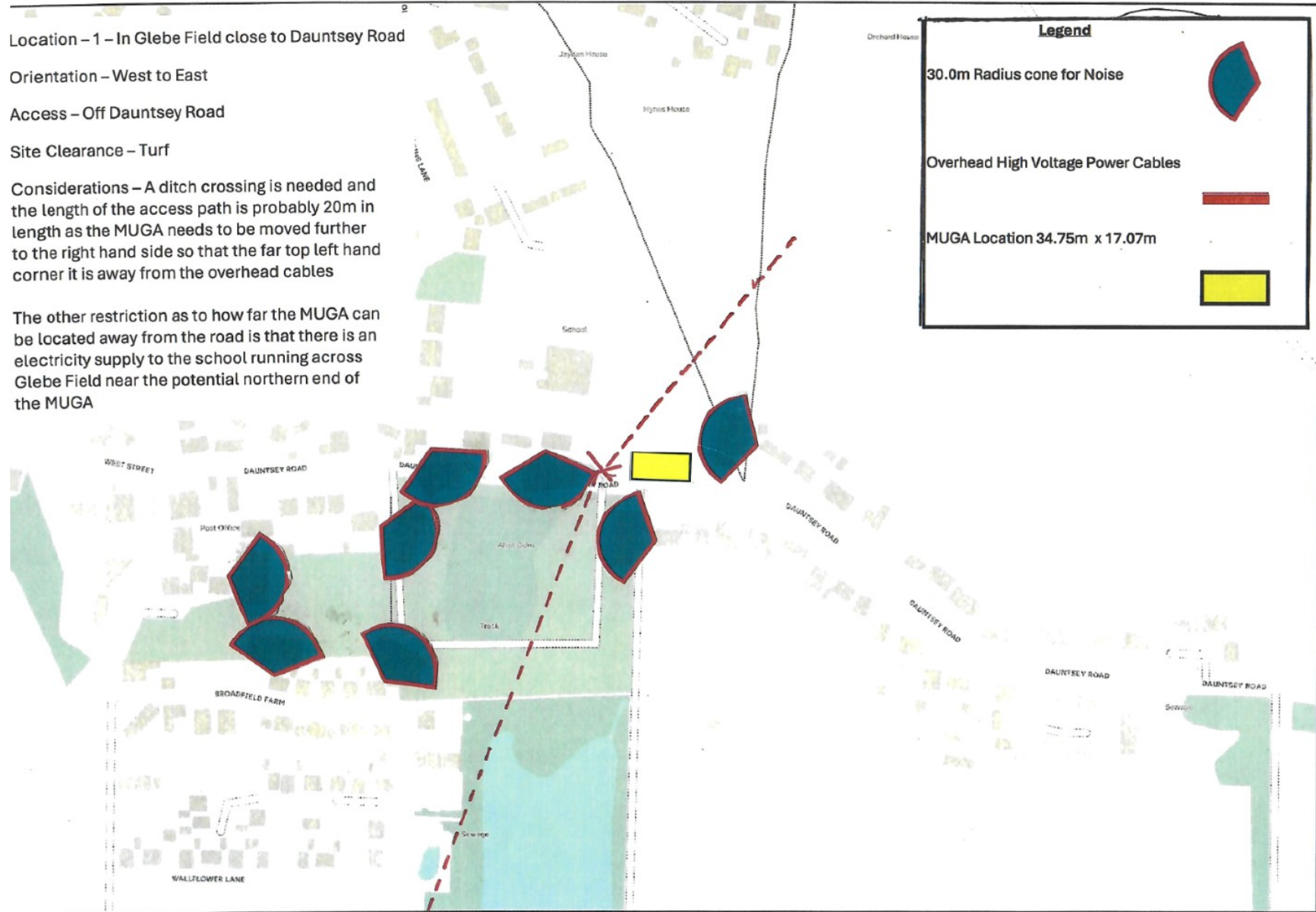
Site Clearance – Turf

Considerations – A ditch crossing is needed and the length of the access path is probably 20m in length as the MUGA needs to be moved further to the right hand side so that the far top left hand corner it is away from the overhead cables

The other restriction as to how far the MUGA can be located away from the road is that there is an electricity supply to the school running across Glebe Field near the potential northern end of the MUGA

**Legend**

- 30.0m Radius cone for Noise 
- Overhead High Voltage Power Cables 
- MUGA Location 34.75m x 17.07m 



Location – 2 – In Glebe Field close to Dauntsey Road




Orientation – North to South

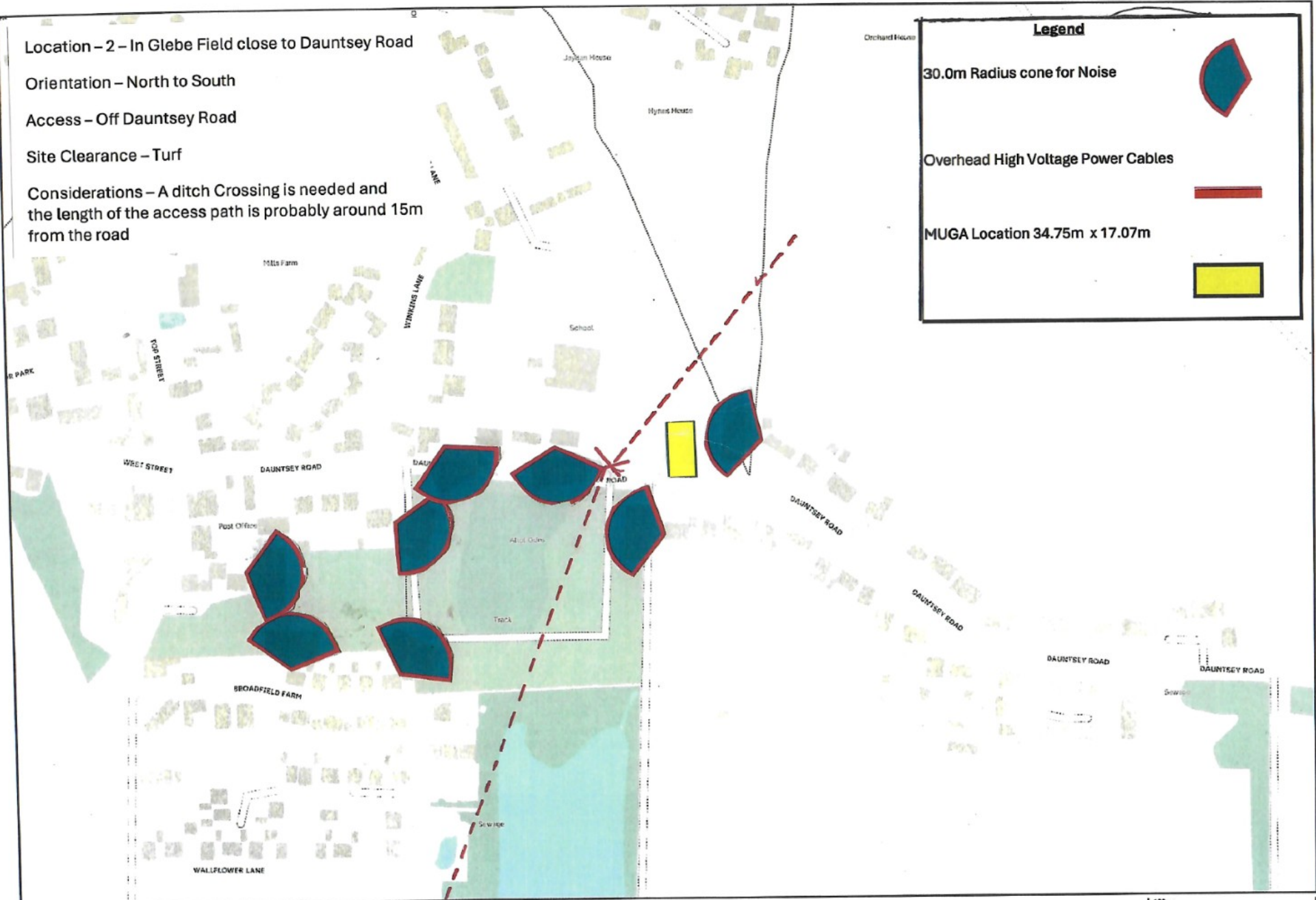
Access – Off Dauntsey Road

Site Clearance – Turf

Considerations – A ditch Crossing is needed and the length of the access path is probably around 15m from the road

**Legend**

- 30.0m Radius cone for Noise 
- Overhead High Voltage Power Cables 
- MUGA Location 34.75m x 17.07m 



Location – 3 – In the Great Somerford Free Gardens (Lower righthand corner near the lake)

Orientation - North to South

Access – Off Dauntsey Road

Site Clearance – Potential loss of around 14 allotments that are in this area of the free gardens and which would be under the footprint for the MUGA

Considerations – There will be tree litter scattering leaves and twigs onto any MUGA located in this area which will increase the costs of cleaning the MUGA. The length of the access path needed for pedestrians and maintenance equipment is probably 100m from the road which could be costly. The MUGA in this location cannot be located closer to Dauntsey Road because of potential noise impacting the nearby housing.

